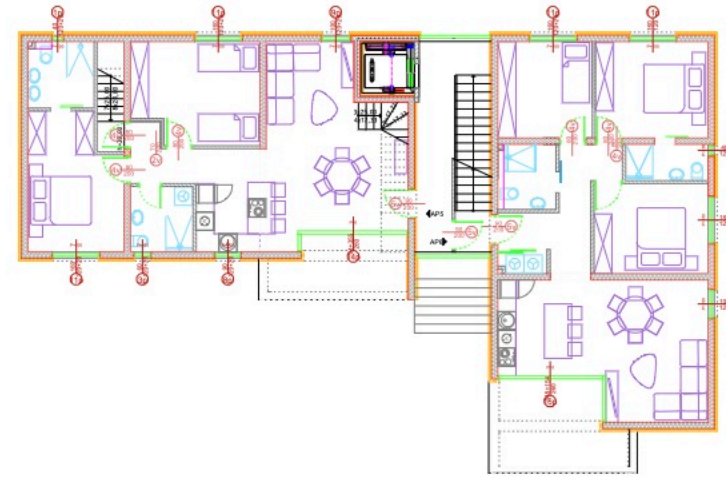
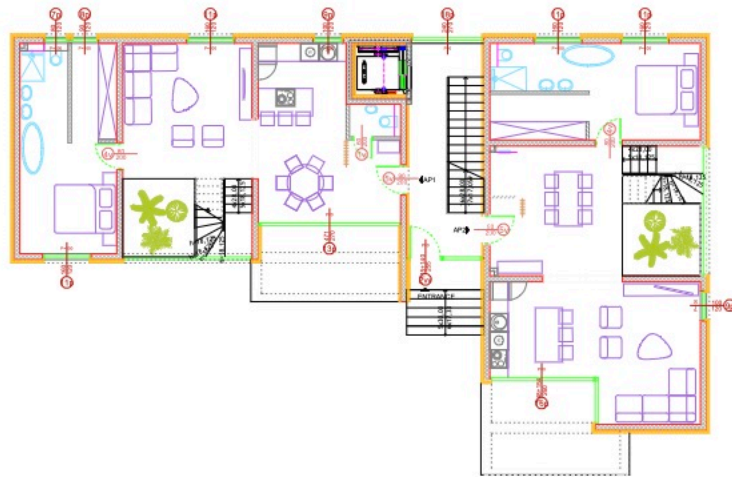


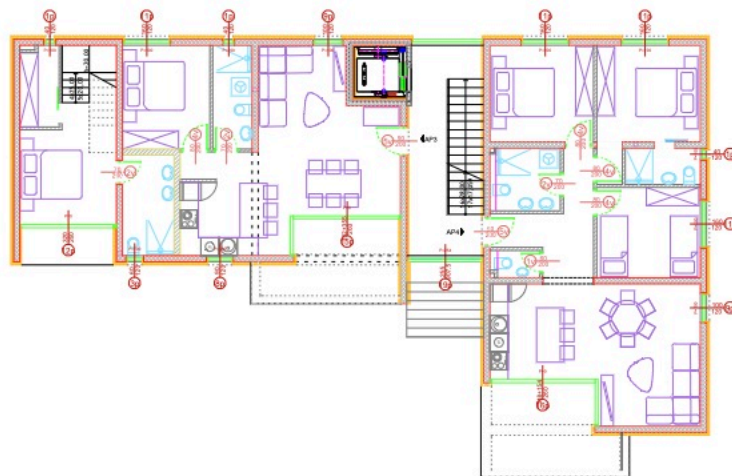
BASEMENT



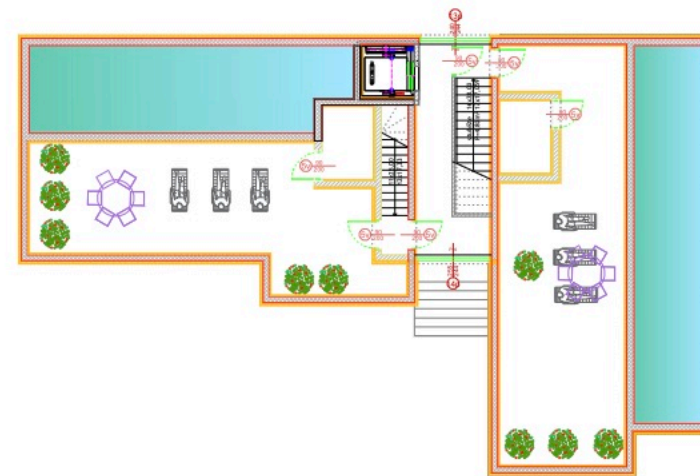
SECOND FLOOR



GROUND FLOOR



FIRST FLOOR

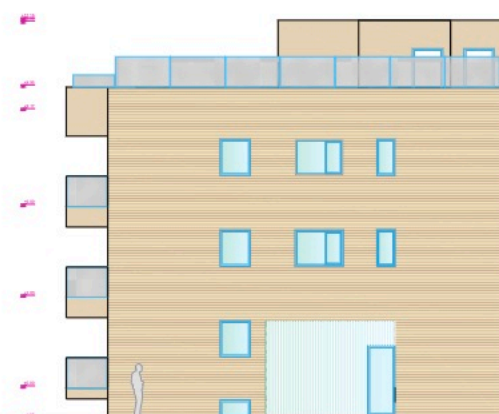


ROOF TERRACE

FLOOR PLANS



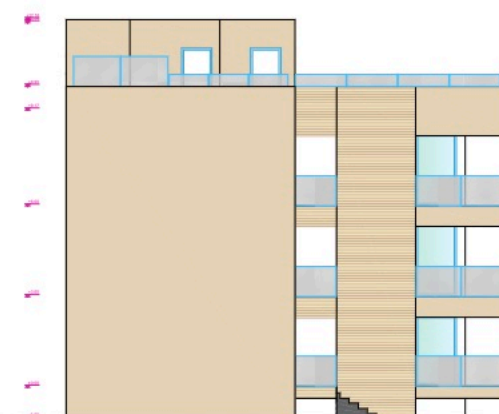
SOUTH-EAST



NORTH-EAST



NORTH-WEST



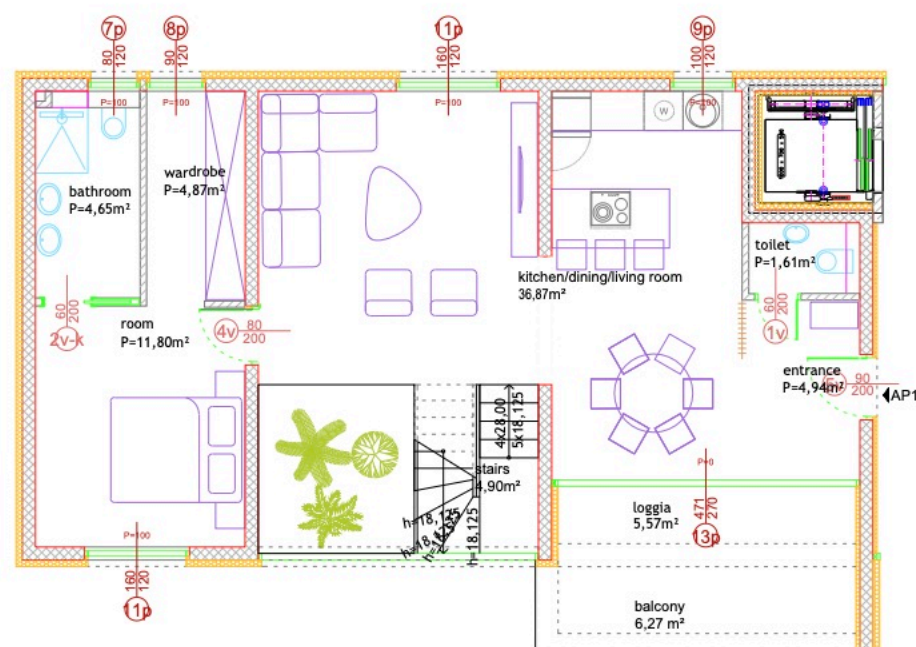
SOUTH-WEST

FACADES

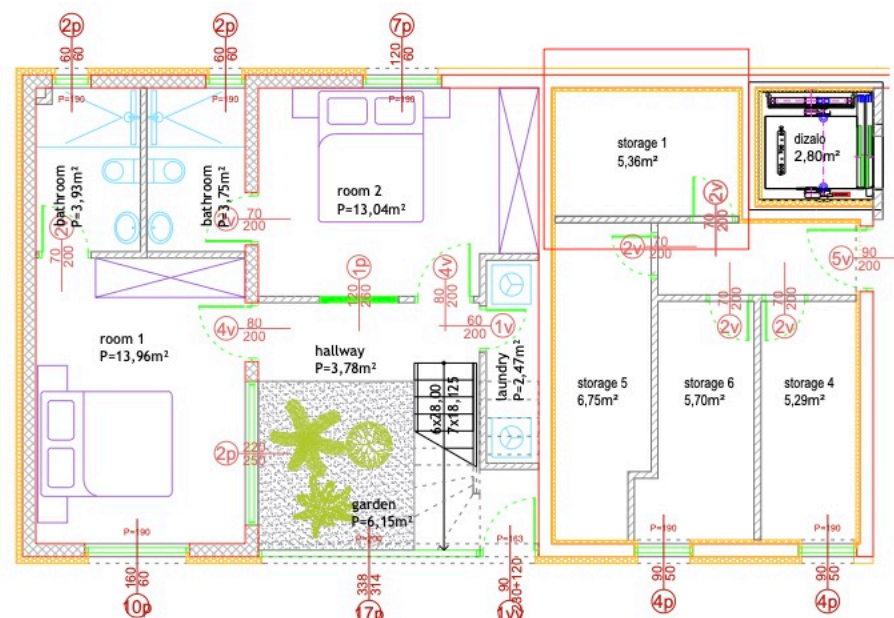
UNIT 1

Unit 1 is located on the ground floor and basement of the south wing of the building. It consists of an entrance hall, toilet, connected kitchen, dining room and living room with exit to the terrace. There is a room with private bathroom and wardrobe. From the living room there is a staircase leading to an attractive inner garden, and two more bedrooms with private bathrooms. Below the stairs is a laundry room.

The apartment has a storage room in the basement, part of the yard, and a parking space.



GROUND FLOOR



BASEMENT



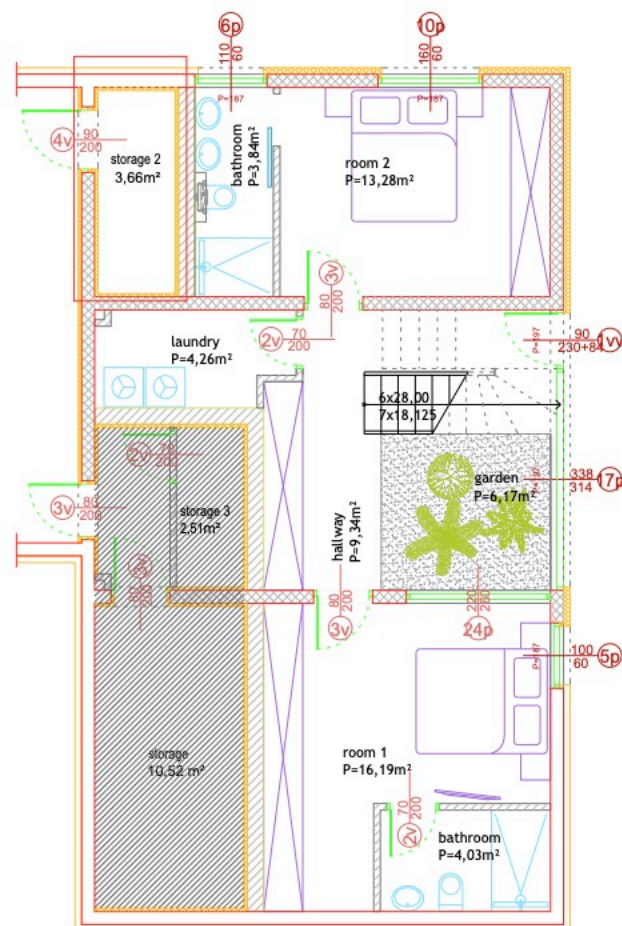
	ROOM	FLOOR AREA	FACTOR	AREA
1.	entrance	4,94m ²	1,0	4,94m ²
2.	toilet	1,61m ²	1,0	1,61m ²
3.	kitchen/dining/living	36,87m ²	1,0	36,87m ²
4.	loggia	5,57m ²	0,75	4,18m ²
5.	balcony	6,27m ²	0,5	3,13m ²
6.	room	11,80m ²	1,0	11,80m ²
7.	bathroom	4,65m ²	1,0	4,65m ²
8.	wardrobe	4,87m ²	1,0	4,87m ²
9.	stairs	4,90m ²	1,0	4,90m ²
10.	garden	6,15m ²	1,0	6,15m ²
11.	hallway	3,78m ²	1,0	3,78m ²
12.	room 1	13,96m ²	1,0	13,96m ²
13.	bathroom	3,93m ²	1,0	3,93m ²
14.	bathroom	3,75m ²	1,0	3,75m ²
15.	room 2	13,04m ²	1,0	13,04m ²
16.	laundry	2,47m ²	1,0	2,47m ²
				124,03m²
17.	storage 1	5,36m ²	0,5	2,68m ²
18.	parking spot	13,75m ²	0,2	2,75m ²
19.	yard	60,86m ²	0,1	6,08m ²
	TOTAL			135,54m²

UNIT 2

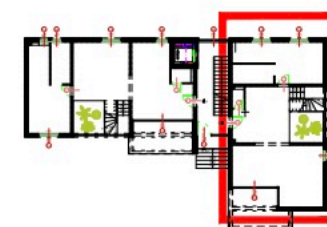
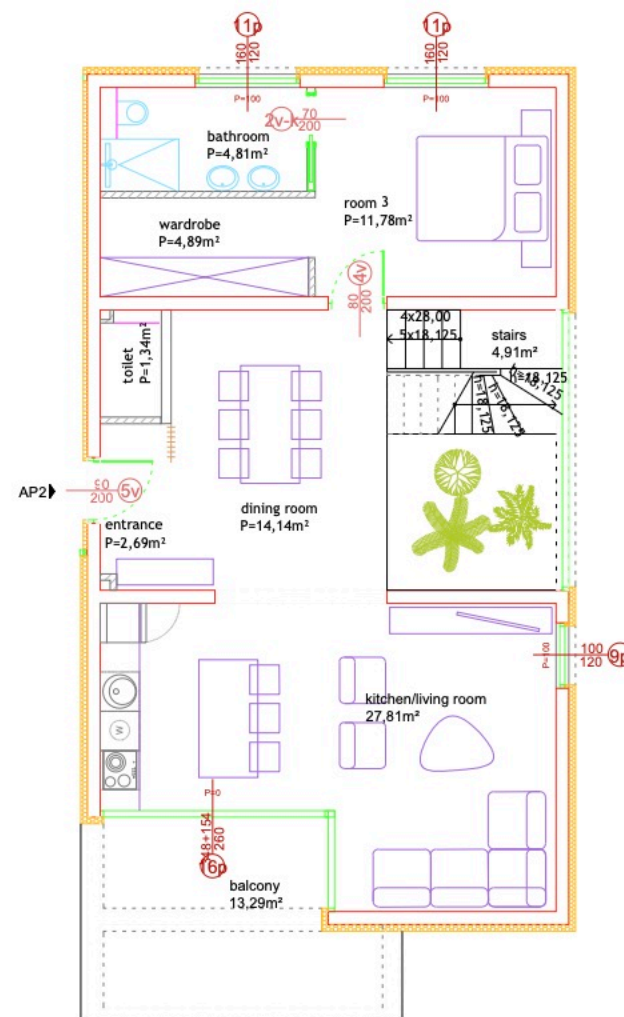
Unit 2 is located on the ground floor and basement of the north wing of the building. It consists of an entrance hall, toilet, connected kitchen, dining room and living room with exit to the terrace. There is a bedroom with private bathroom and wardrobe. From the living room there is a staircase leading to an attractive inner garden, and two more bedrooms with private bathrooms. There is also a laundry room.

The apartment has a storage room in the basement, part of the yard, and a parking space.

BASEMENT



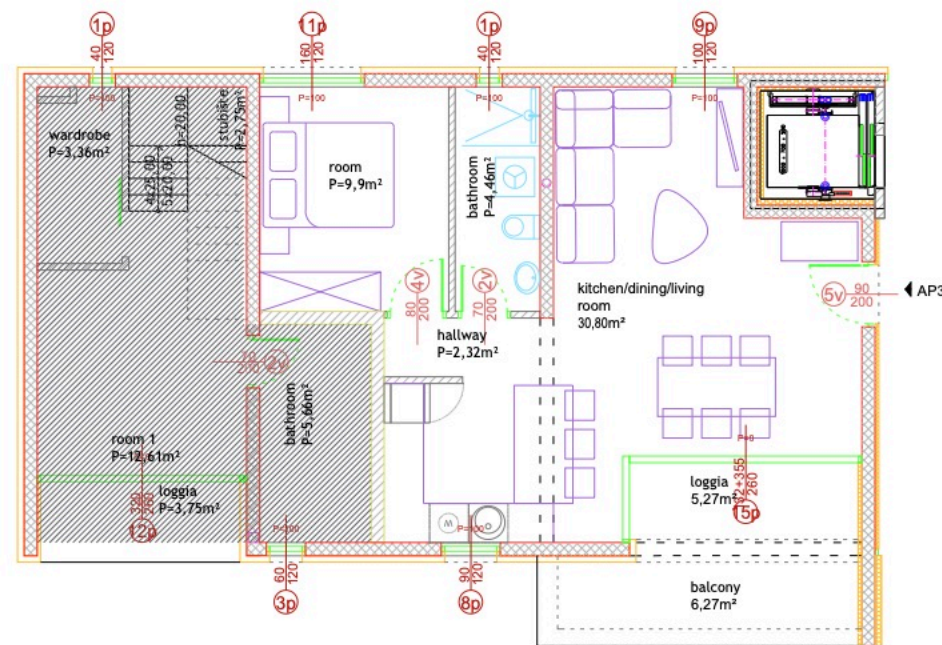
GROUND FLOOR



	ROOM	FLOOR AREA	FACTOR	AREA
1.	entrance	2,69m ²	1,0	2,69m ²
2.	toilet	1,34m ²	1,0	1,34m ²
3.	dining room	14,14m ²	1,0	14,14m ²
4.	kitchen/living room	27,81m ²	1,0	27,81m ²
5.	balcony	13,29m ²	0,5	6,64m ²
6.	room 3	11,78m ²	1,0	11,78m ²
7.	bathroom	4,81m ²	1,0	4,81m ²
8.	wardrobe	4,89m ²	1,0	4,89m ²
9.	stairs	4,91m ²	1,0	4,91m ²
10.	garden	6,17m ²	1,0	6,17m ²
11.	hallway	9,34m ²	1,0	9,34m ²
12.	room 1	16,19m ²	1,0	16,19m ²
13.	bathroom	4,03m ²	1,0	4,03m ²
14.	bathroom	3,84m ²	1,0	3,84m ²
15.	room 2	13,28m ²	1,0	13,28m ²
16.	laundry	4,26m ²	1,0	4,26m ²
				136,12m²
17.	storage 2	3,66m ²	0,5	1,83m ²
18.	parking spot	13,75m ²	0,2	2,75m ²
19.	yard	63,35m ²	0,1	6,33m ²
	TOTAL			147,03m²

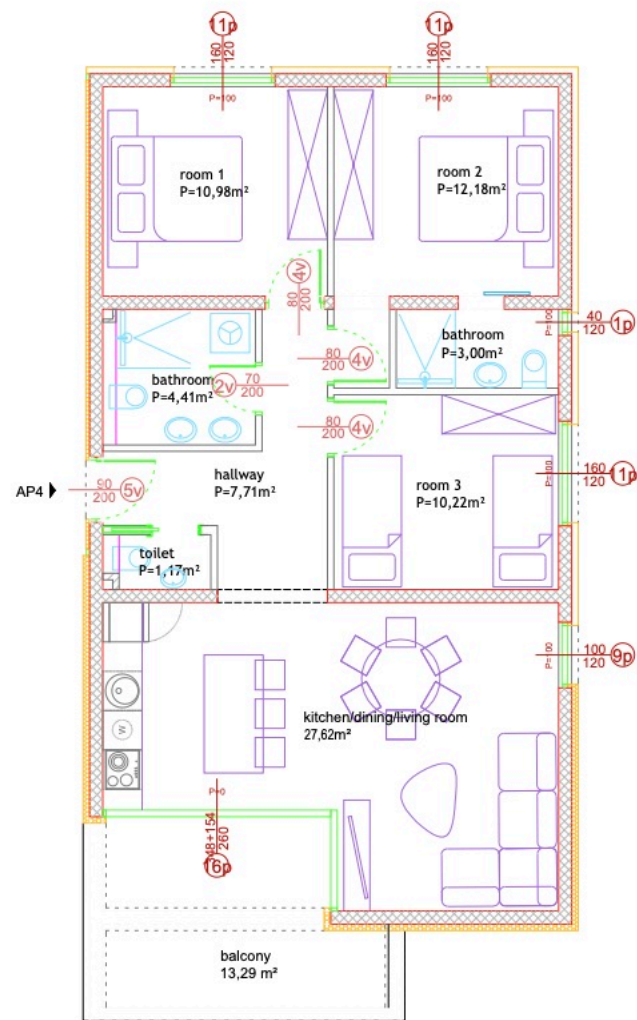
UNIT 3

Unit 3 consists of a connected kitchen, dining room and living room with access to the terrace, hallway, bedroom and bathroom. The apartment has a storage room in the basement and a parking space.

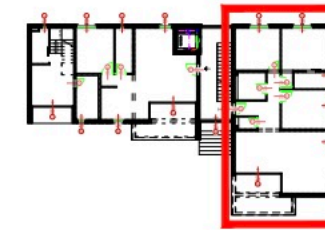


FIRST FLOOR

	ROOM	FLOOR AREA	FACTOR	AREA
1.	kitchen/dining/living	30,8m²	1,0	30,8m²
2.	loggia	5,27m²	0,75	3,95m²
3.	balcony	6,27m²	0,5	3,13m²
4.	room	9,9m²	1,0	9,9m²
5.	bathroom	4,46m²	1,0	4,46m²
6.	hallway	2,32m²	1,0	2,32m²
				54,56m²
7.	storage 3	2,51m²	0,5	1,25m²
8.	parking spot	13,75m²	0,2	2,75m²
	TOTAL			58,56m²



FIRST FLOOR

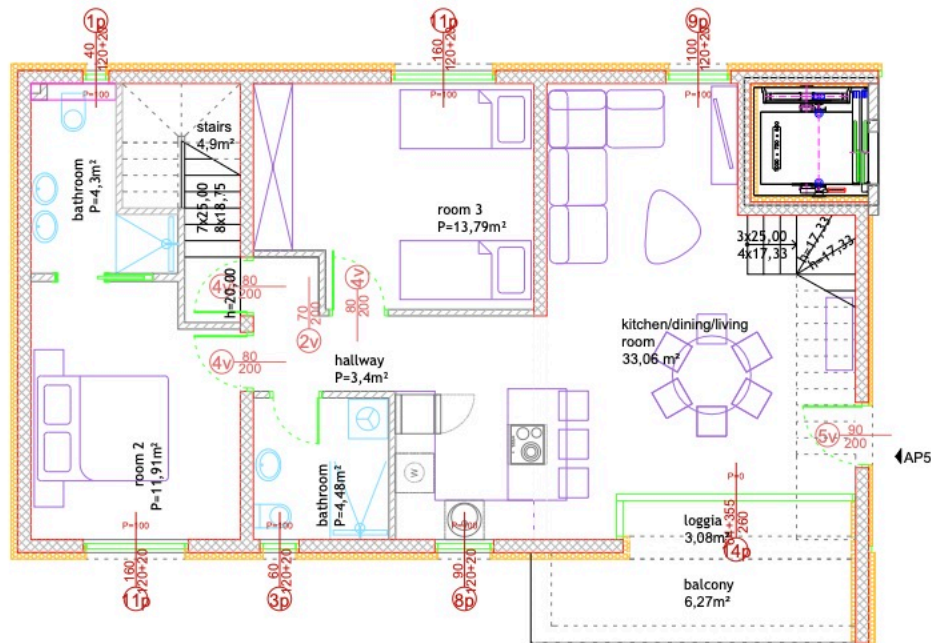
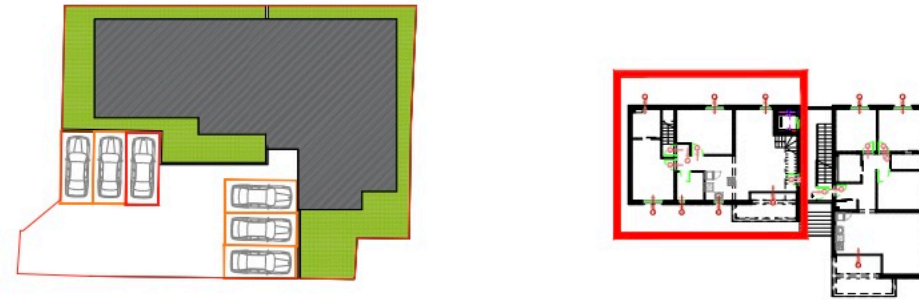


Apartment 4 consists of a hallway, toilet, bathroom, three bedrooms, one of which has its own bathroom, and a connected kitchen, dining room and living room with balcony. The apartment has a storage room in the basement and a parking space in the yard.

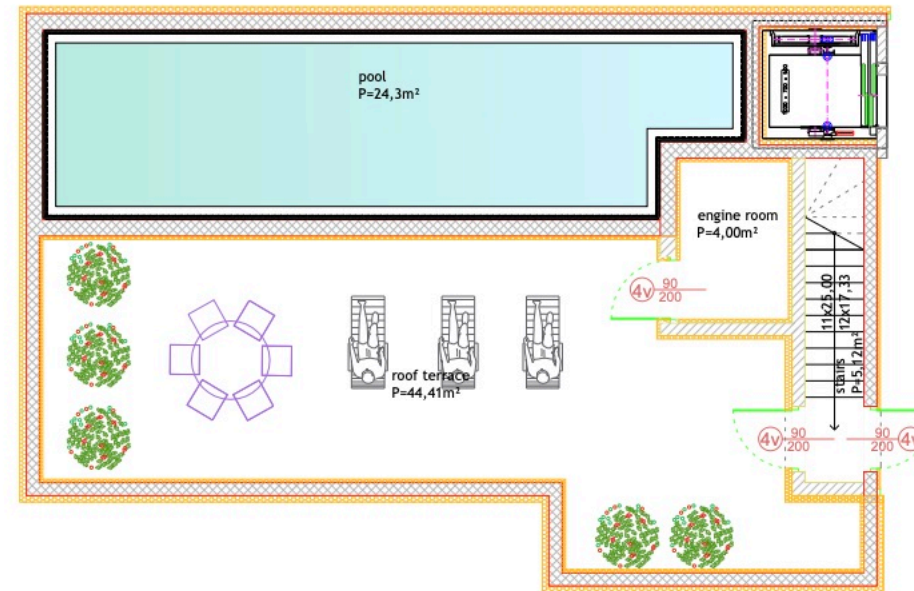
	ROOM	FLOOR AREA	FACTOR	AREA
1.	hallway	7,71m²	1,0	7,71m²
2.	toilet	1,17m²	1,0	1,17m²
3.	kitchen/dining/living	27,62m²	1,0	27,62m²
4.	balcony	13,29m²	0,5	6,64m²
5.	room 3	10,22m²	1,0	10,22m²
6.	bathroom	4,41m²	1,0	4,41m²
7.	room 1	10,98m²	1,0	10,98m²
8.	room 2	12,18m²	1,0	12,18m²
9.	bathroom	3,00m²	1,0	3,00m²
				83,93m²
10.	storage 4	5,29m²	0,5	2,64m²
11.	parking spot	13,75m²	0,2	2,75m²
	TOTAL			89,32m²

UNIT 5

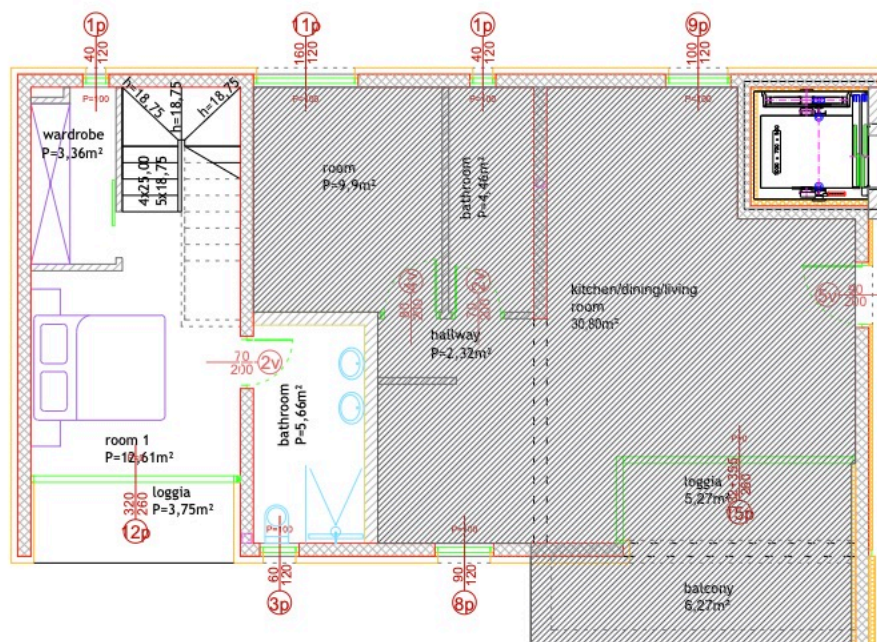
Apartment 5 extends over 3 floors. The entrance to the apartment is located on the second floor - you enter the connected space of the living room, dining room and kitchen, with access to the balcony. A small hallway leads to a bedroom, a bathroom, and another bedroom with a private bathroom. Stairs lead down to the first floor where there is another bedroom with bathroom and wardrobe. From the living room, stairs lead to private roof terrace with pool. The apartment has a parking space in the yard and storage in the basement of the building.



SECOND FLOOR



ROOF TERRACE

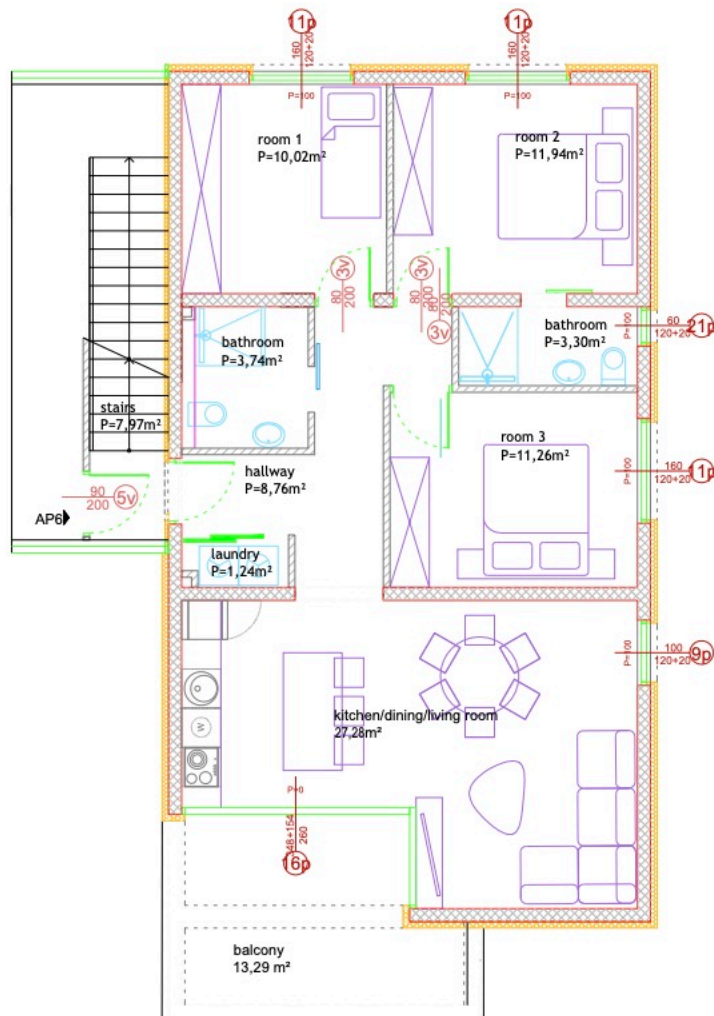


FIRST FLOOR

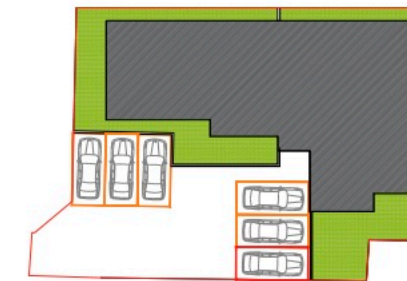
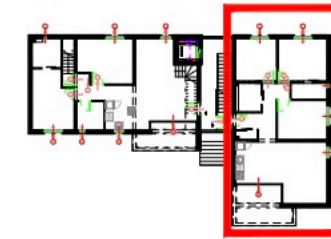
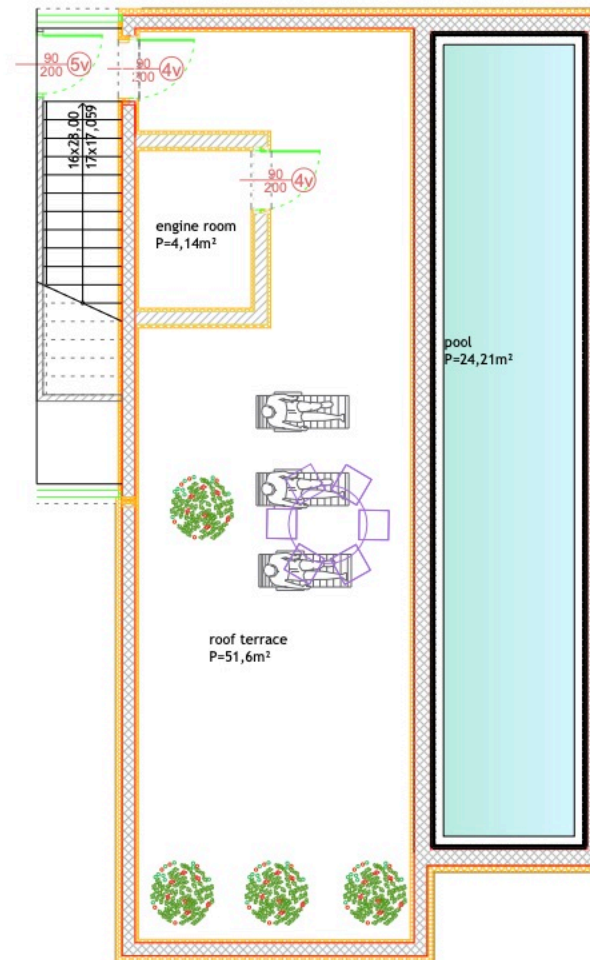
	ROOM	FLOOR AREA	FACTOR	AREA
1.	kitchen/dining/living	33,06m ²	1,0	33,06m ²
2.	loggia	3,08m ²	0,75	2,31m ²
3.	balcony	6,27m ²	0,5	3,13m ²
4.	room 3	13,79m ²	1,0	13,79m ²
5.	bathroom	4,48m ²	1,0	4,48m ²
6.	hallway	3,4m ²	1,0	3,4m ²
7.	stairs	4,90m ²	1,0	4,90m ²
8.	room 2	11,91m ²	1,0	11,91m ²
9.	bathroom	4,30m ²	1,0	4,30m ²
10.	room 1	12,61m ²	1,0	12,61m ²
11.	bathroom	5,66m ²	1,0	5,66m ²
12.	wardrobe	3,36m ²	1,0	3,36m ²
13.	loggia	3,75m ²	0,75	2,81m ²
14.	stairs	5,12m ²	1,0	5,12m ²
15.	pool	24,3m ²	0,5	12,15m ²
16.	roof terrace	44,41m ²	0,25	11,10m ²
17.	engine	4,0m ²	0,25	1,00m ²
				135,09m²
18.	storage 5	6,75m ²	0,5	3,37m ²
19.	parking spot	13,75m ²	0,2	2,75m ²
	TOTAL			141,21m²

UNIT 6

SECOND FLOOR



ROOF TERRACE



Apartment 6 consists of a hallway, bathroom, three bedrooms one of which has its own bathroom, and a connected kitchen, dining room and living room with balcony. From the apartment, stairs lead to private roof terrace with pool. The apartment has a storage room in the basement and a parking space in the yard.

	ROOM	FLOOR AREA	FACTOR	AREA
1.	hallway	8,76m²	1,0	8,76m²
2.	kitchen/dining/living	27,28m²	1,0	27,28m²
3.	balcony	13,29m²	0,5	6,64m²
4.	room 3	11,26m²	1,0	11,26m²
5.	bathroom	3,74m²	1,0	3,74m²
6.	room1	10,02m²	1,0	10,02m²
7.	room 2	11,94m²	1,0	11,94m²
8.	bathroom	3,3m²	1,0	3,3m²
9.	stairs	7,97m²	1,0	7,97m²
10.	pool	24,21m²	0,5	12,10m²
11.	roof terrace	51,6m²	0,25	12,9m²
12.	engine	4,14m²	0,25	1,03m²
				116,94m²
13.	storage 6	5,70m²	0,5	2,85m²
14.	parking spot	13,75m²	0,2	2,75m²
	TOTAL			122,54m²