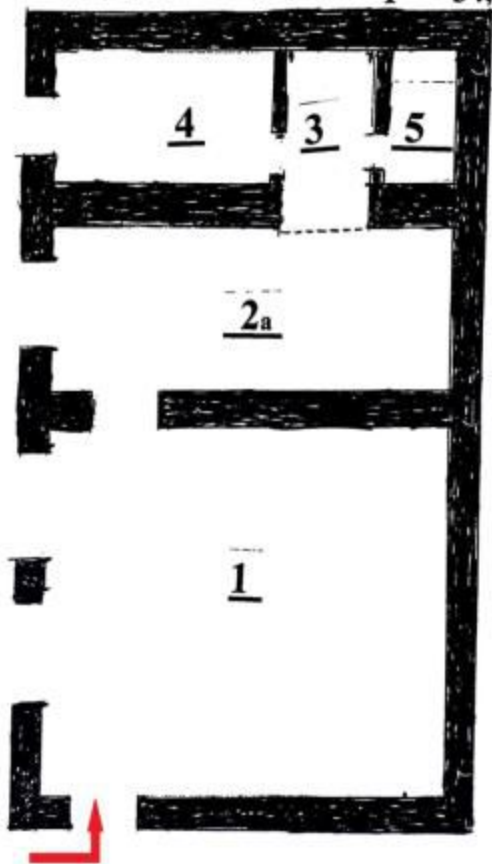


Dvorišni stan

Površina : 34,8 m²

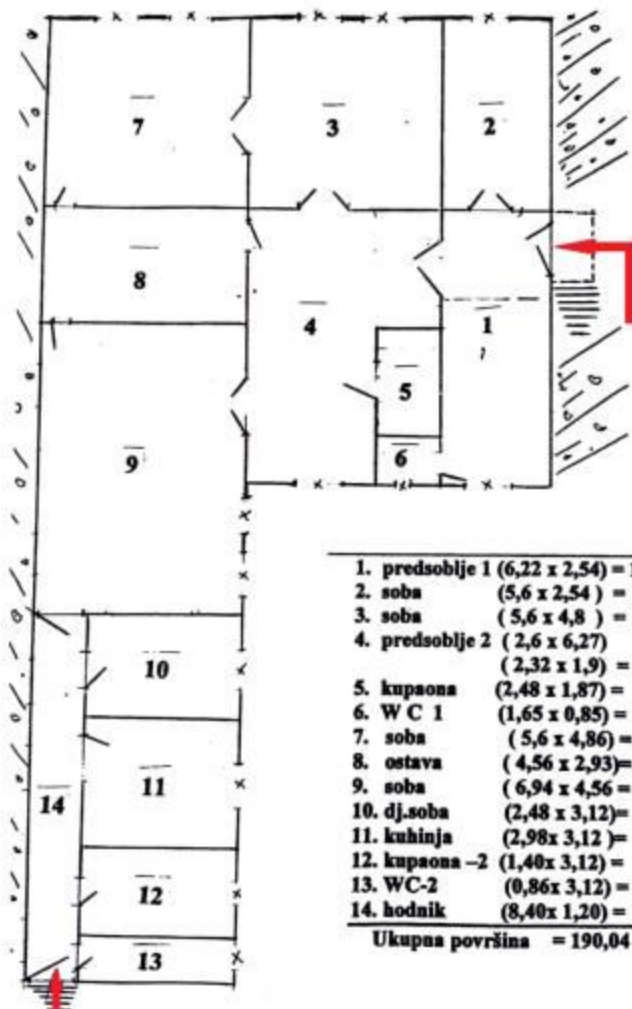
- | | | |
|--------------|-------------|----------------------|
| 1. SOBA | 400 x 481 = | 19,24 m ² |
| 2. KUHINJA a | 179 x 481 = | 8,61 m ² |
| 3. KUHINJA b | 185 x 99 = | 1,85 m ² |
| 4. KUPAONA | 145 x 250 = | 3,62 m ² |
| 5. SMOČNIC | 100 x 150 = | 1,5 m ² |
-

P = 34,8 m²



P= 190,04 m²

V= 3,5 m



1. predsoblje 1	(6,22 x 2,54) = 15,79 m ²
2. soba	(5,6 x 2,54) = 14,22 m ²
3. soba	(5,6 x 4,8) = 26,88 m ²
4. predsoblje 2	(2,6 x 6,27)
	(2,32 x 1,9) = 20,72 m ²
5. kupaona	(2,48 x 1,87) = 4,84 m ²
6. WC 1	(1,65 x 0,85) = 1,4 m ²
7. soba	(5,6 x 4,86) = 27,22 m ²
8. ostava	(4,56 x 2,93) = 13,36 m ²
9. soba	(6,94 x 4,56) = 31,65 m ²
10. dj.soba	(2,48 x 3,12) = 7,74 m ²
11. kuhinja	(2,98 x 3,12) = 9,29 m ²
12. kupaona -2	(1,40 x 3,12) = 4,37 m ²
13. WC-2	(0,86 x 3,12) = 2,68 m ²
14. hodnik	(8,40 x 1,20) = 10,08 m ²

Ukupna površina = 190,04 m²