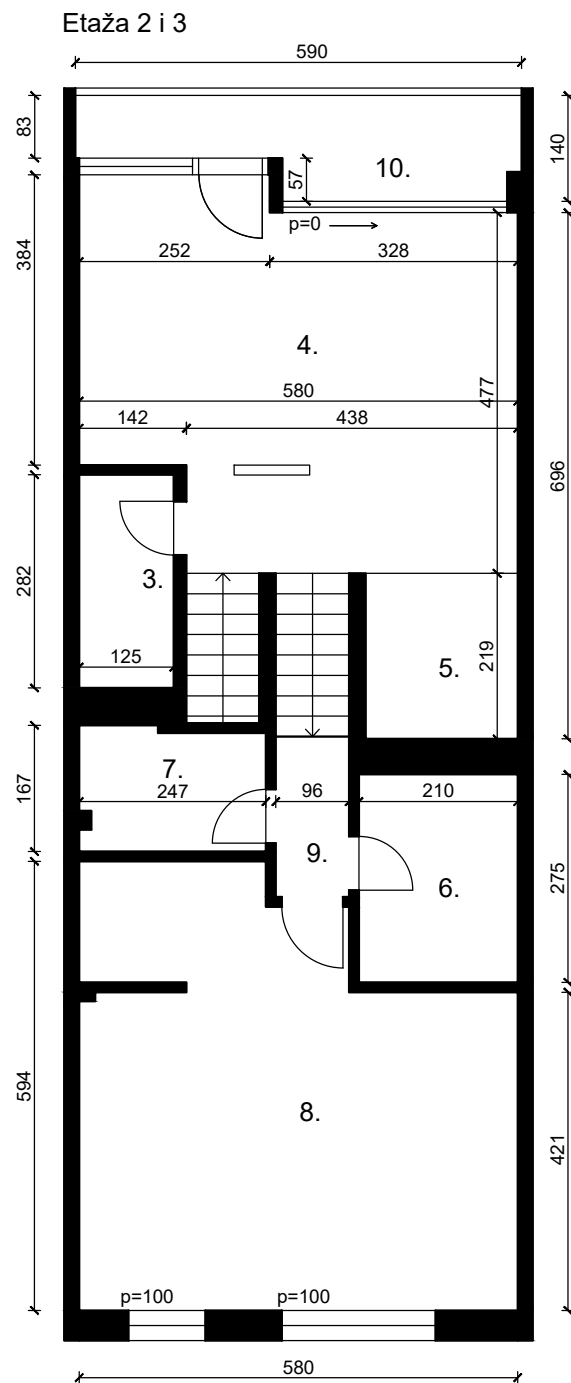
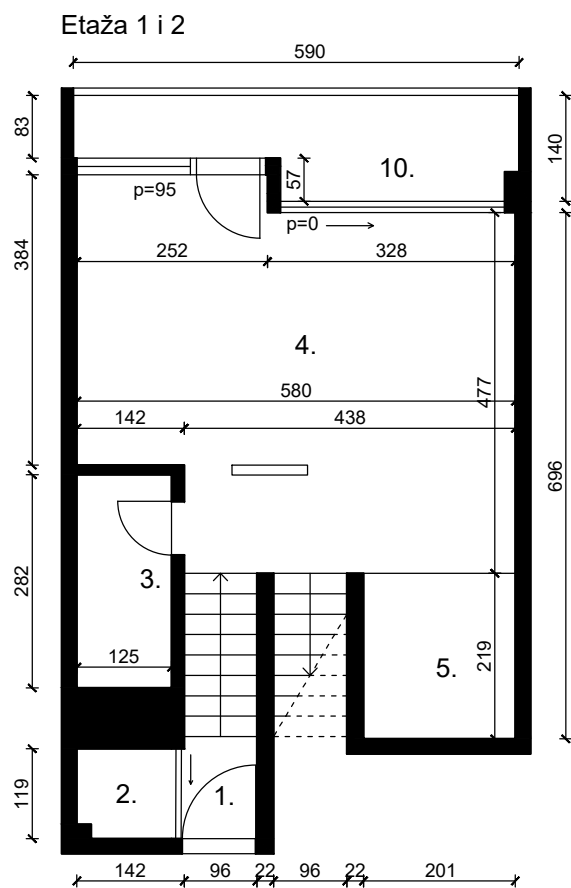


# Stan na Zagrebačkoj aveniji



| Prostorija    | Površina (m <sup>2</sup> ) |
|---------------|----------------------------|
| 1. Ulaz       | 1,3 + 2,07 (stubište)      |
| 2. Spremište  | 1,65                       |
| 3. WC         | 3,53                       |
| 4. Soba 1     | 26,9                       |
| 5. Kuhinja    | 4,4                        |
| 6. Kupaonica  | 5,78                       |
| 7. Garderoba  | 3,94                       |
| 8. Soba 2     | 29,72                      |
| 9. Hodnik     | 2,06 + 2,07 (stubište)     |
| 10. Lođa      | 7,21                       |
| <b>Ukupno</b> | <b>83,42 + 7,21</b>        |