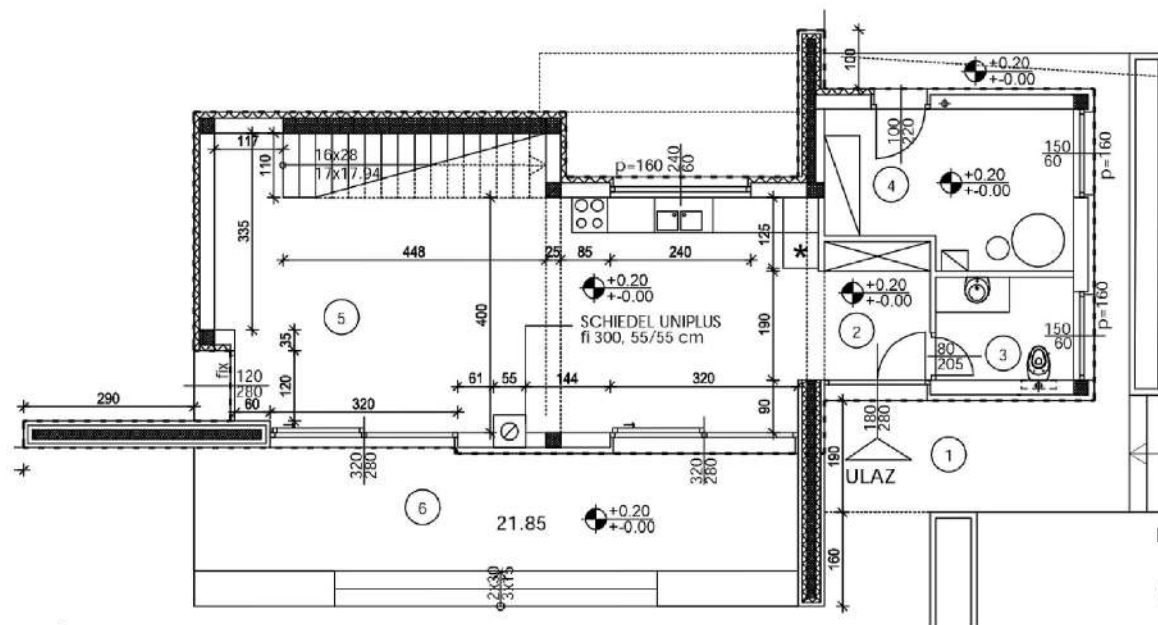
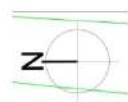


Ground-floor plan

1. Covered entrance: 16,18 m²
2. Corridor: 4,23 m²
3. Toilet: 4,10 m²
4. Machine room: 10,55 m²
5. Living room: 46,40 m²
6. Covered terrace: 27,54 m²

Grund -floor area : 109 m²



First-floor plan

1. Corridor + staircase: 18,00 m²
2. Bedroom: 14,10 m²
3. Bathroom: 5,70 m²
4. Bedroom: 15,60 m²
5. Bathroom: 5,35 m²
6. Covered terrace: 18,63 m²
7. Bedroom: 19,00 m²
8. Bathroom: 5,75 m²

First-floor area : 102,13 m²

