

M 1:100

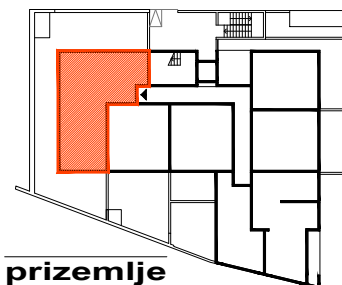
**STAN S1 - trosobni stan**

1. ulaz/hodnik	9.54m <sup>2</sup>
2. wc	2.42m <sup>2</sup>
3. kupaonica	5.22m <sup>2</sup>
4. soba	8.00m <sup>2</sup>
5. soba	8.00m <sup>2</sup>
6. soba	11.20m <sup>2</sup>
7. kuhinja s blagovanjem	10.82m <sup>2</sup>
8. dnevni boravak	13.19m <sup>2</sup>
stan unutarnje	<b>68.39m<sup>2</sup></b>
9. nat. vrt 6.30m <sup>2</sup> x 0.50	3.15m <sup>2</sup>
10. nat. vrt 6.90m <sup>2</sup> x 0.50	3.45m <sup>2</sup>
11. nenat. vrt 74.33m <sup>2</sup> x 0.25	18.58m <sup>2</sup>
stan vanjsko	<b>25.18m<sup>2</sup></b>

**UKUPNO 93.57m<sup>2</sup>**



**južno pročelje**



**prizemlje**