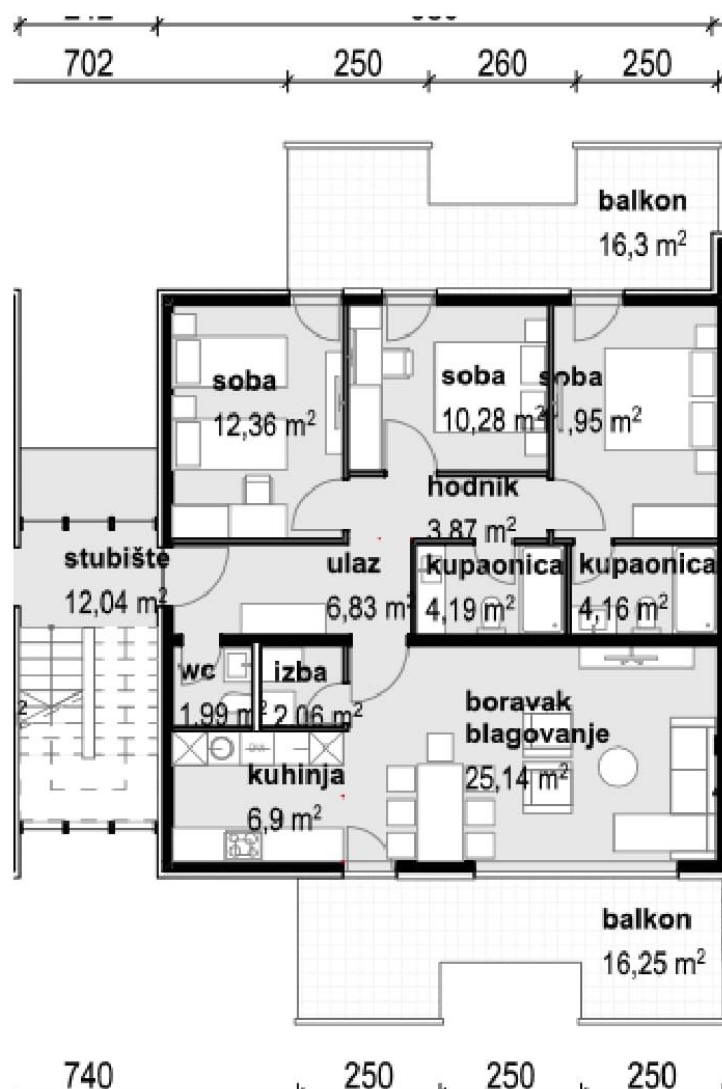
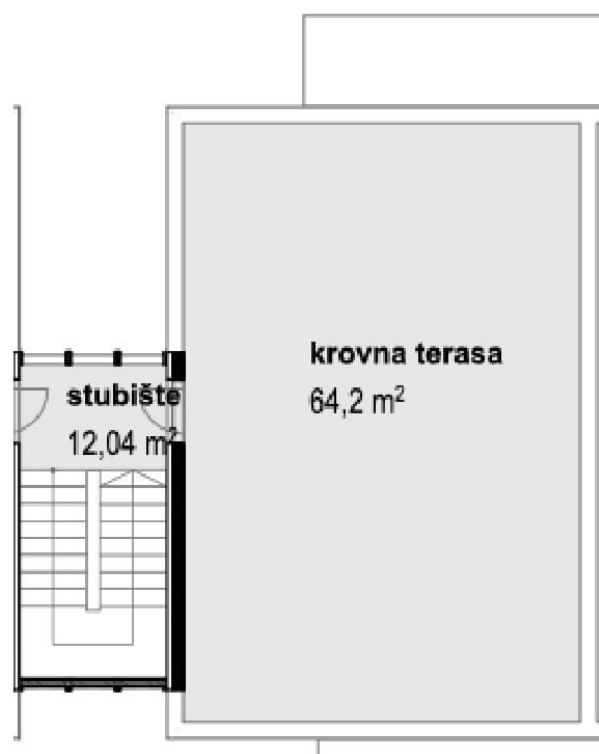


# Layouts of Apartment S6

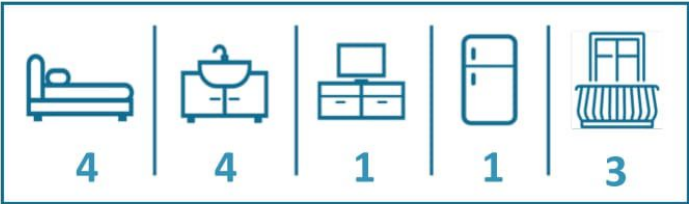
## SECOND FLOOR



## FOOFTOP



# Information about Apartment S6



**VARIOUS PROPERTIES:**

Balcony Rooftop Terrace	Air Conditioning Central heating	Water system Septic system Electrical connection	Telephone, DSL / Internet 2 Parking spaces
----------------------------	-------------------------------------	--------------------------------------------------------	--------------------------------------------------

Apartment	Floor	Description	Area
S6	2nd floor	Balcony	13,75
S6	2nd floor	Balcony	13,9
S6	2nd floor	Living room	24,91
S6	2nd floor	Hallway	3,87
S6	2nd floor	Roomful	2,06
S6	2nd floor	Kitchen	6,9
S6	2nd floor	Bathroom	4,16
S6	2nd floor	Bathroom	4,19
S6	2nd floor	Bedroom	10,28
S6	2nd floor	Bedroom	11,95
S6	2nd floor	Bedroom	12,36
S6	2nd floor	Entrance	6,83
S6	2nd floor	WC	1,99
S6	Rooftop	Terrace	64,2
S6	Ground floor	Parking space	12,5
S6	Ground floor	Parking space	12,5
TOTAL AREA			206,35
PRICE			443.775 €
DISCOUNT -25%			332.831 €