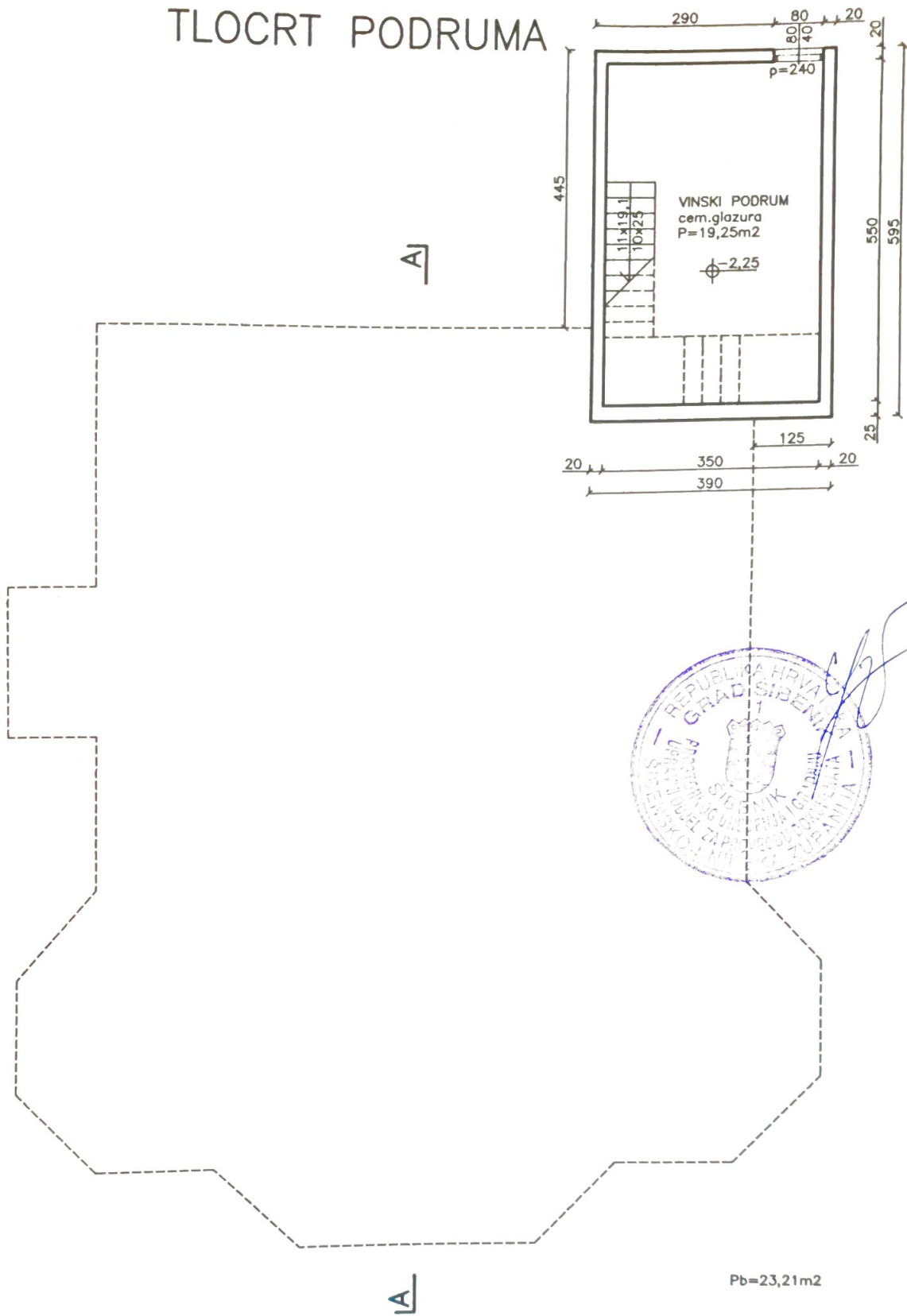
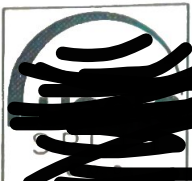
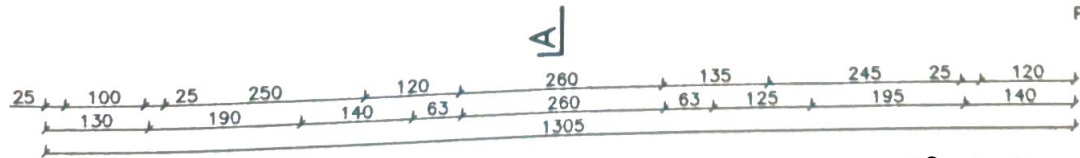
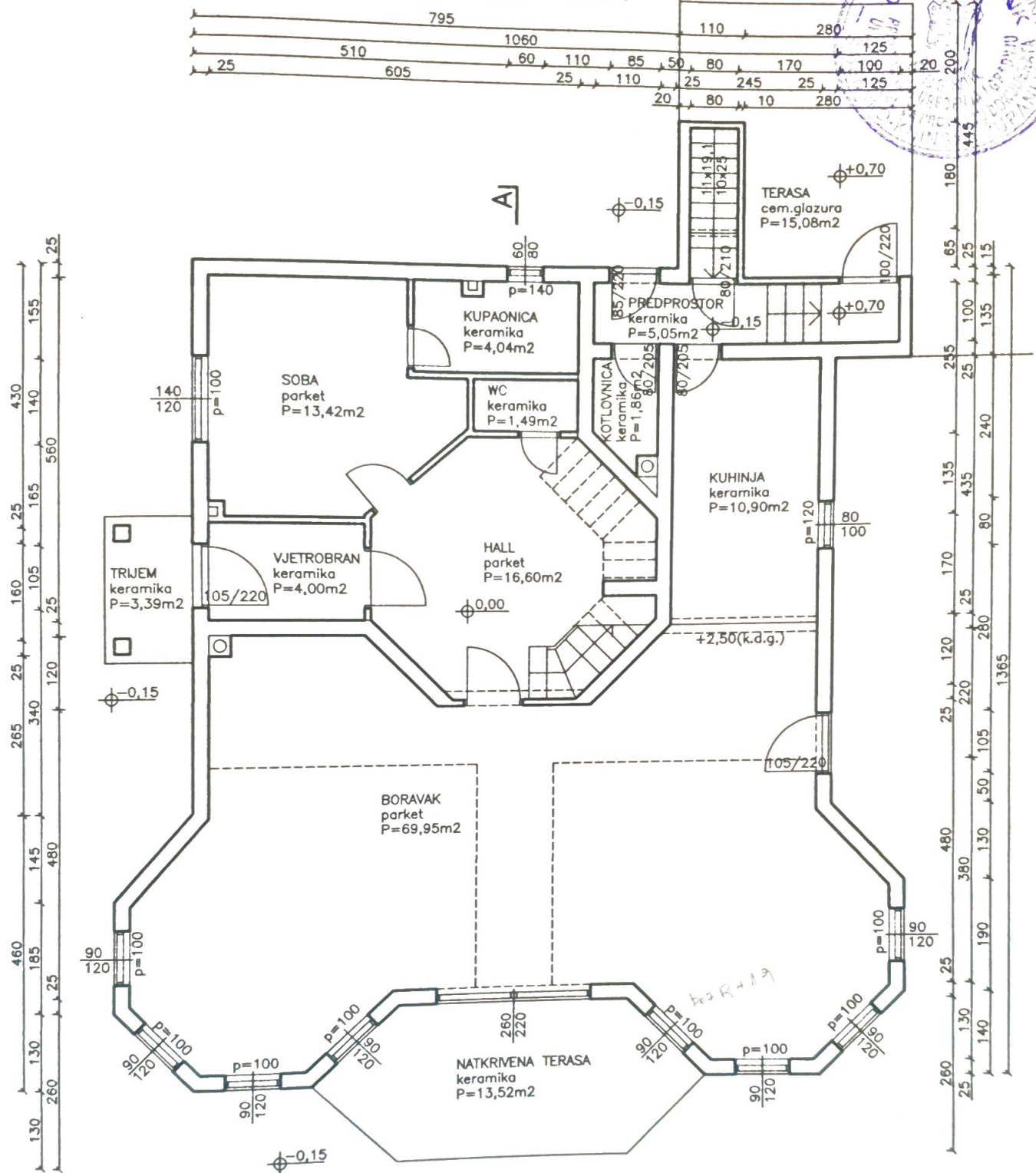
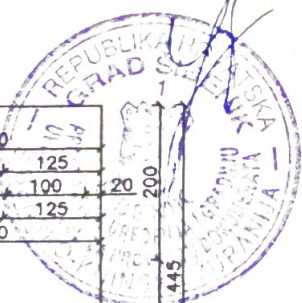


# TLOCRT PODRUMA



	GRAĐEVINA: Stambena zgrada Dubravi kod Šibenika (Dubrava)	
	FAZA: ARHITEKTONSKA SNIMKA IZVEDENOG STANJA NEZAKONITO IZGRADENE ZGRADE	T.D. 134-12 MJERILO: 1:100
SADRŽAJ: TLOCRT PODRUMA		LIST: 2
SPLIT, ožujak 2012.		LIST: 2

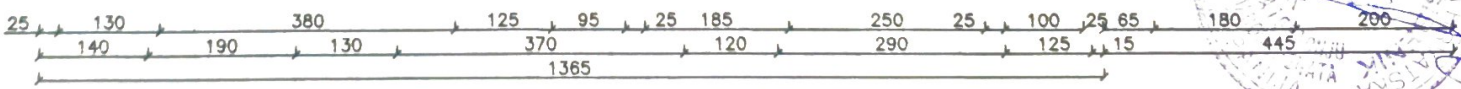
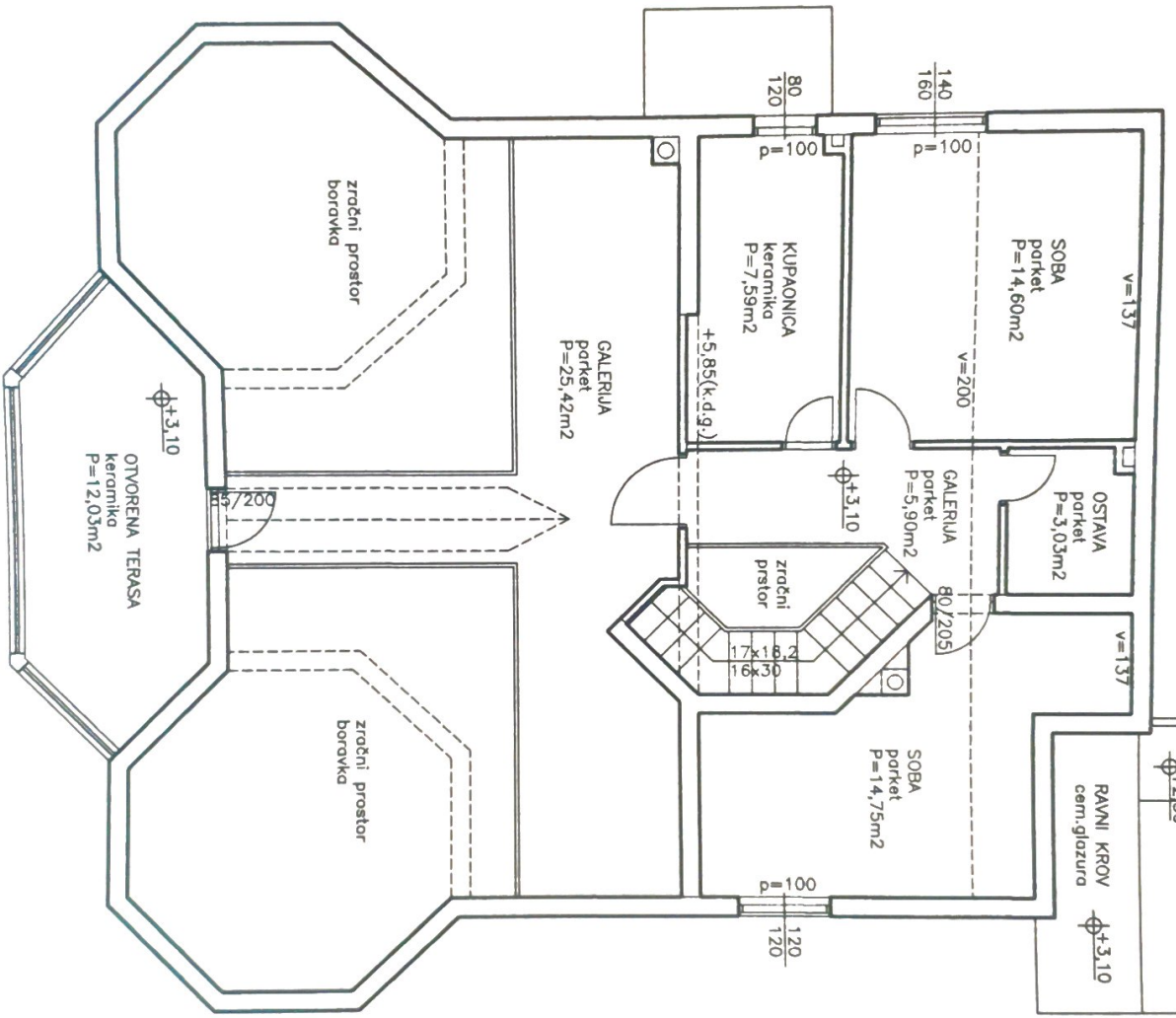
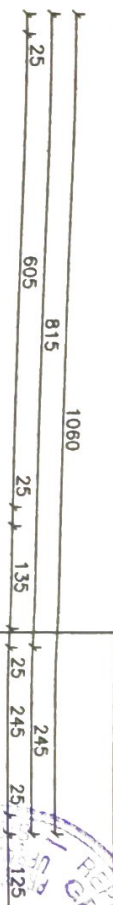
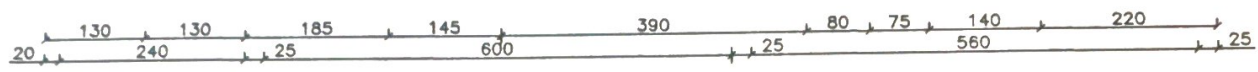
# TLOCRT PRIZEMLJA



Ovlašteni arhitekt
   
 A 1490

	Dubrava kod Šibenika	FAZA: ARHITEKTONSKA SNIMKA IZVEDENOG STANJA NEZAKONITO IZGRADENE ZGRADE
	GRADEVINA: Stambena zgrada Dubravi kod Šibenika	SADRŽAJ: TLOCRT PRIZEMLJA
	K.O. Dubrava	T.D. 134-12 MJERILO: 1:100
	SPLIT, 02.06.2012.	LIST: 3

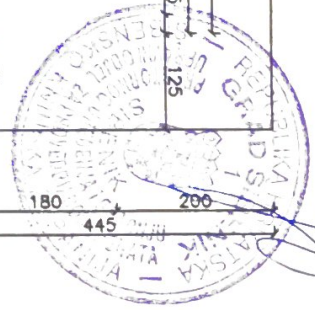
# TLOCRT KATA



Pb=101,64m<sup>2</sup>



*[Handwritten signature]*  
A 1490



*[Redacted information]*

SRBIJA  
REPUBLIKA SRBIJA  
K.O. Beograd  
SRBIJA

FAZA:	ARHITEKTONSKA SNIMKA IZVEDENOG STANJA NEZAKONITO IZGRADENE ZGRADE
SADRŽAJ:	TLOCRT KATA
SPLET,	ožujak 2012.
USTI:	4