

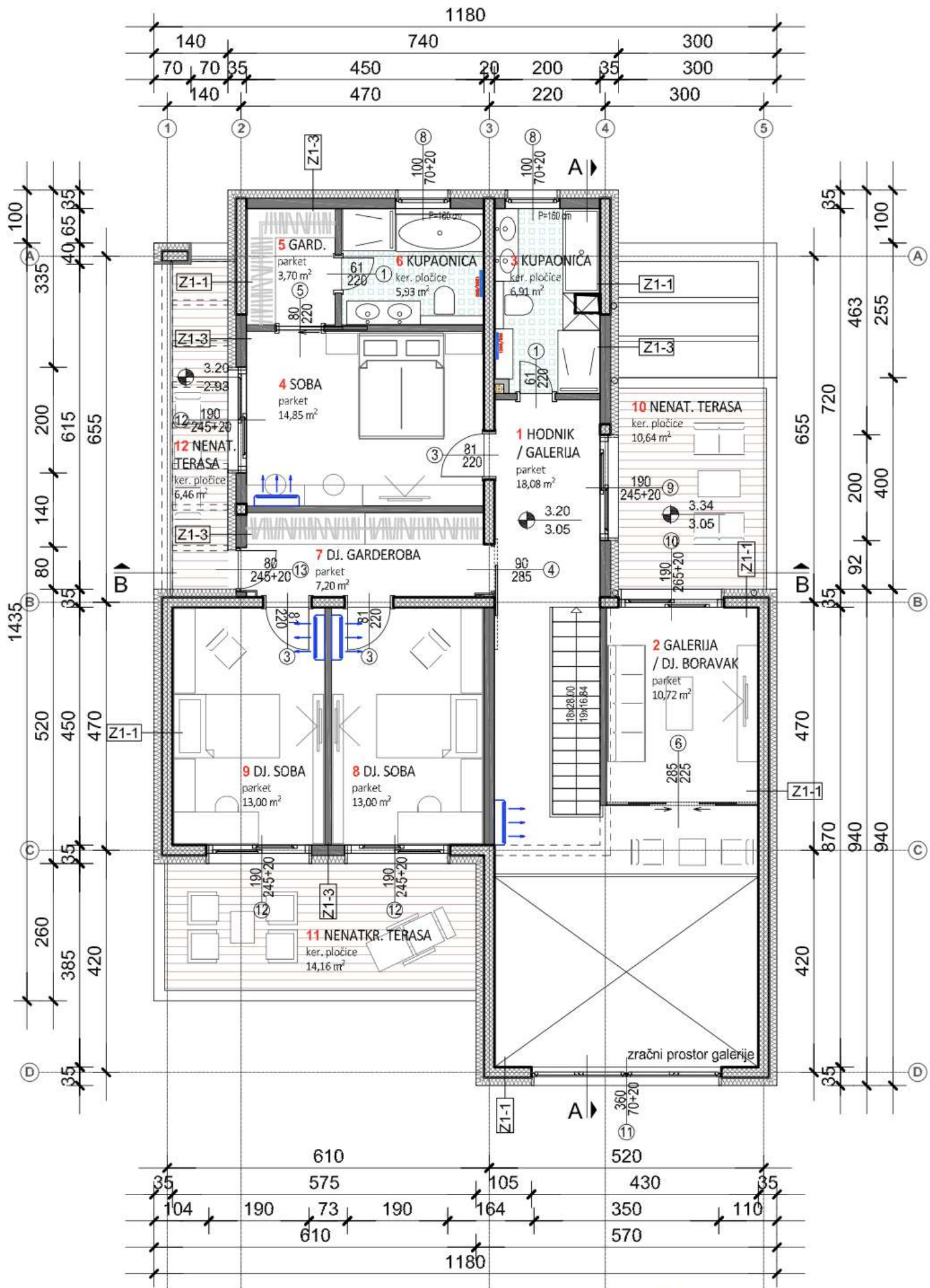
**P parcele = 722 m<sup>2</sup>**

**PRIRODNI TEREN = 323,7 m<sup>2</sup> - 44,83%**

**GBP PRIZEMLJE = 150,14 m<sup>2</sup>**

**TP PRIZEMLJE = 178,19 m<sup>2</sup>**

RELATIVNA VISINSKA KOTA ±0.00



RELATIVNA VISINSKA KOTA ±0.00  
 ODGOVARA APSOLUTNOJ VISINSKOJ KOTI 113.08 mnv

**P parcele = 722 m<sup>2</sup>**  
 PRIRODNI TEREN = 323,7 m<sup>2</sup> - 44,83%  
 (> 30%)

GBP<sub>KAT</sub> = 118,66 m<sup>2</sup>  
 TP<sub>KAT</sub> = 178,20 m<sup>2</sup>