

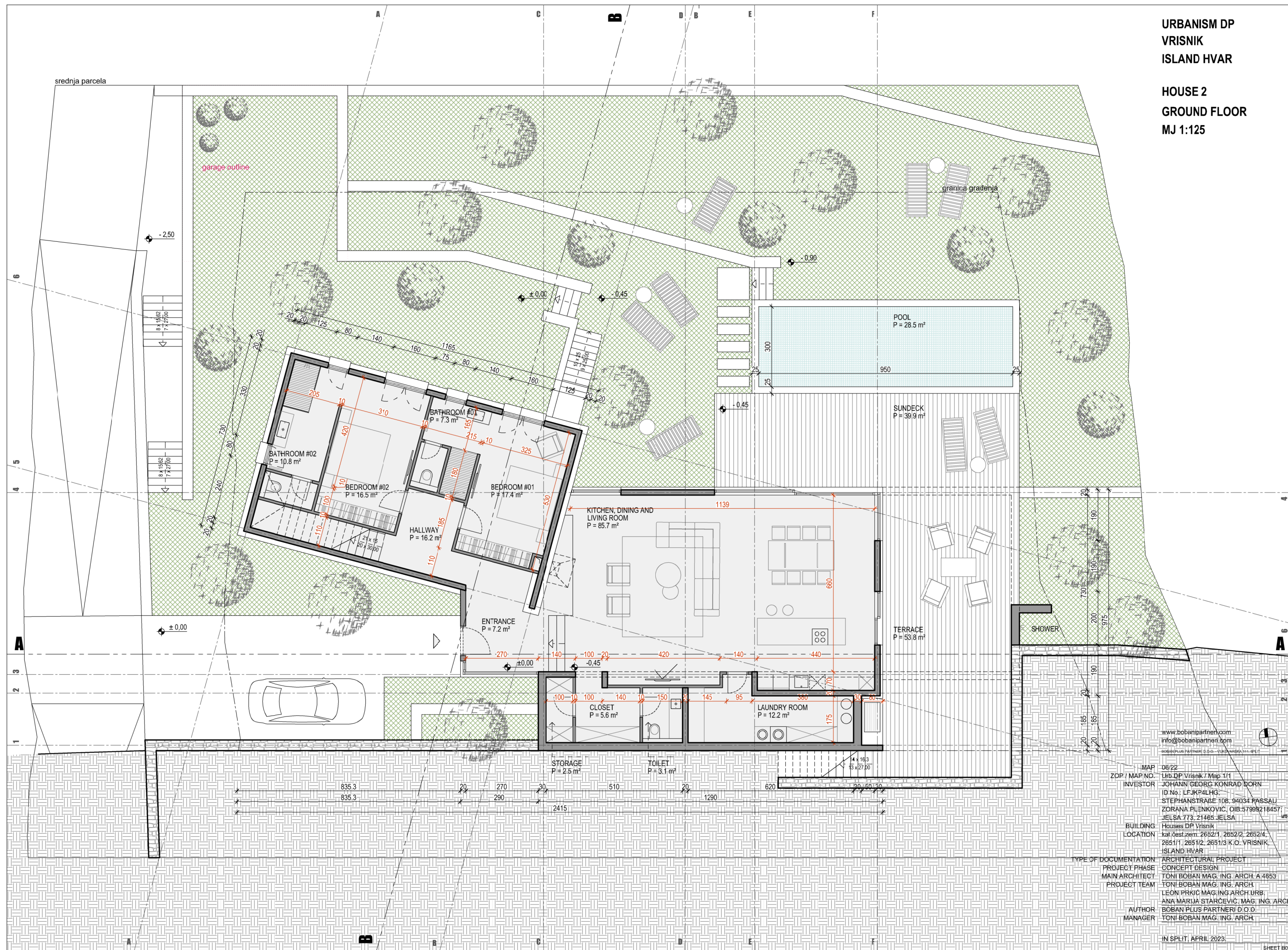
www.bobanipartner.com  
info@bobanipartner.com

MAP 06/22  
ZOP / MAP NO. Urb.DP Vrisnik / Map 1/1  
INVESTOR JOHANN GEORG KONRAD DORN  
ID No.: LFJKP4LHG  
STEPHANSTRASSE 10B, 94034 PASSAU  
ZORANA PLENKOVIĆ, OIB:57999218457  
JELSA 773, 21465 JELSA

BUILDING Houses DP Vrisnik  
LOCATION kat.čest.zem: 2652/1, 2652/2, 2652/4,  
2651/1, 2651/2, 2651/3 K.O. VRISNIK  
ISLAND HVAR

TYPE OF DOCUMENTATION ARCHITECTURAL PROJECT  
PROJECT PHASE CONCEPT DESIGN  
MAIN ARCHITECT TONI BOBAN MAG. ING. ARCH. A 4853  
PROJECT TEAM TONI BOBAN MAG. ING. ARCH.  
LEON PRKIĆ MAG. ING. ARCH. URB.  
ANA MARIJA STARČEVIĆ, MAG. ING. ARCH.  
AUTHOR BOBAN PLUS PARTNERI D.O.O.  
MANAGER TONI BOBAN MAG. ING. ARCH.

IN SPLIT, APRIL 2023.



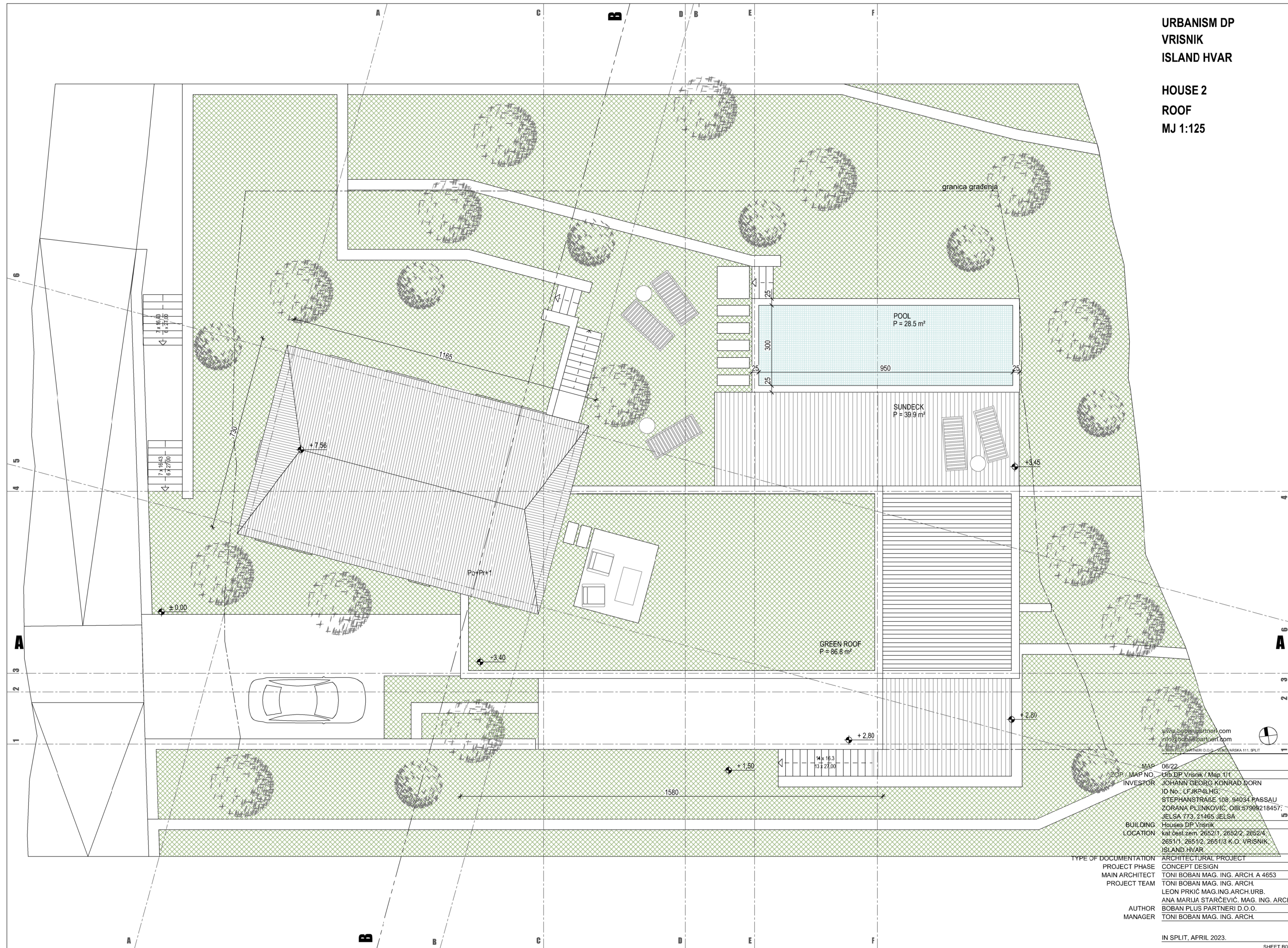
www.bobanipartner.com  
info@bobanipartner.com  
BOBANPLUS PARTNERI D.O.O. - VLAKVARNA 111 0011

MAP	06/22
ZOP / MAP NO.	Urb DP Vrisnik / Map 1/1
INVESTOR	JOHANN GEORG KONRAD DORN ID No.: LFJKP4LHG STEPHANSTRASSE 10B, 94034 PASSAU ZORANA PLENKOVIĆ, OIB-57999218457 JELSA 773, 21465 JELSA
BUILDING	Houses DP Vrisnik
LOCATION	kat.čest.zem. 2652/1, 2652/2, 2652/4, 2651/1, 2651/2, 2651/3 K.O. VRISNIK ISLAND HVAR
TYPE OF DOCUMENTATION	ARCHITECTURAL PROJECT
PROJECT PHASE	CONCEPT DESIGN
MAIN ARCHITECT	TONI BOBAN MAG. ING. ARCH. A 4853
PROJECT TEAM	TONI BOBAN MAG. ING. ARCH. LEON PRKIĆ MAG. ING. ARCH. URB. ANA MARIJA STARČEVIĆ, MAG. ING. ARCH.
AUTHOR	BOBAN PLUS PARTNERI D.O.O.
MANAGER	TONI BOBAN MAG. ING. ARCH.



URBANISM DP  
VRISNIK  
ISLAND HVAR

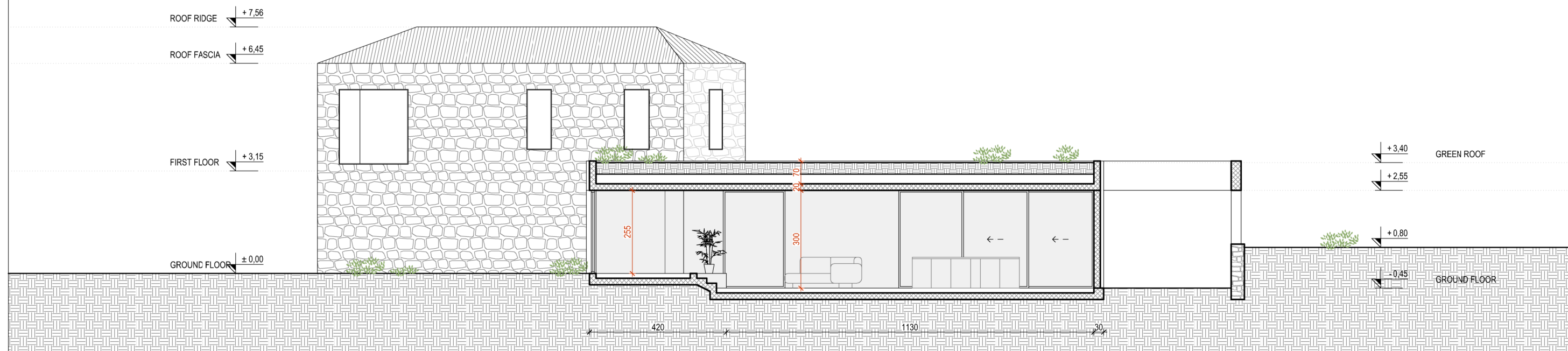
HOUSE 2  
ROOF  
MJ 1:125



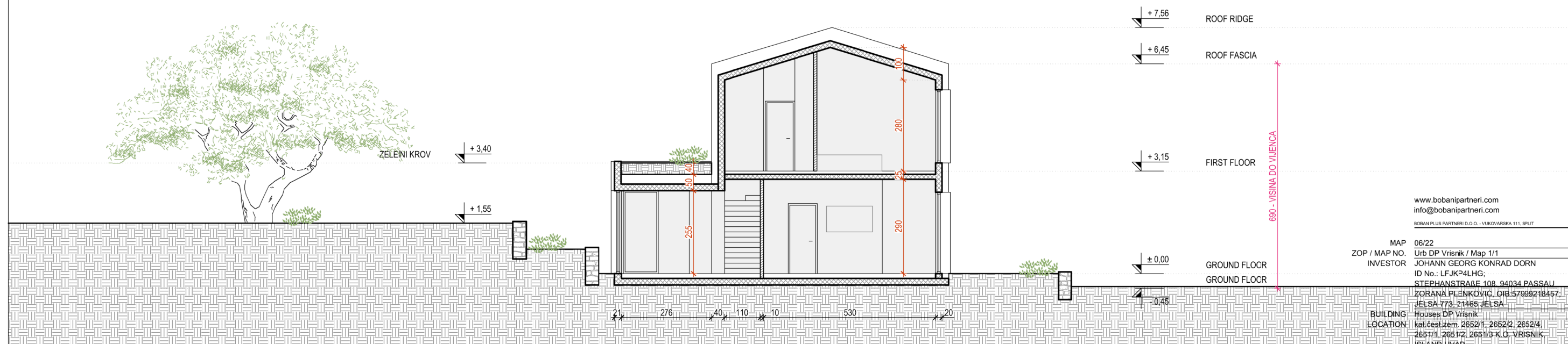
www.bobanpartner.com  
info@bobanpartner.com  
BOBAN PLUS PARTNERI D.O.O. - HRVATSKA 111, SPLIT

MAP	06/22
ZGP / MAP NO.	Urb DP Vrisnik / Map 1/1
INVESTOR	JOHANN GEORG KONRAD DORN ID No.: LFJKP4LHG STEPHANSTRASSE 108, 94034 PASSAU ZORANA PLENKOVIĆ, OIB 57998218457; JELSA 773, 21465 JELSA
BUILDING	Houses DP Vrisnik
LOCATION	kat.čest.zem. 2652/1, 2652/2, 2652/4, 2651/1, 2651/2, 2651/3 K.O. VRISNIK, ISLAND HVAR
TYPE OF DOCUMENTATION	ARCHITECTURAL PROJECT
PROJECT PHASE	CONCEPT DESIGN
MAIN ARCHITECT	TONI BOBAN MAG. ING. ARCH. A 4653
PROJECT TEAM	TONI BOBAN MAG. ING. ARCH. LEON PRKIĆ MAG.ING.ARCH.URB. ANA MARIJA STARČEVIĆ, MAG. ING. ARCH.
AUTHOR	BOBAN PLUS PARTNERI D.O.O.
MANAGER	TONI BOBAN MAG. ING. ARCH.

IN SPLIT, APRIL 2023.



SECTION A-A



SECTION B-B

www.bobanpartneri.com  
info@bobanpartneri.com

BOBAN PLUS PARTNERI D.O.O. - VUKOVARSKA 111, SPLIT

MAP	06/22
ZOP / MAP NO.	Urb DP Vrisnik / Map 1/1
INVESTOR	JOHANN GEORG KONRAD DORN ID No.: LFJKP4LHG; STEPHANSTRASSE 108, 94034 PASSAU, ZORANA PLENKOVIĆ, OJB 57999218457, JELSA 773, 21465 JELSA
BUILDING	Houses DP Vrisnik
LOCATION	kat.čest.zem 2652/1, 2652/2, 2652/4, 2651/1, 2651/2, 2651/3 K.O. VRISNIK, ISLAND HVAR
TYPE OF DOCUMENTATION	ARCHITECTURAL PROJECT
PROJECT PHASE	CONCEPT DESIGN
MAIN ARCHITECT	TONI BOBAN MAG. ING. ARCH. A 4653
PROJECT TEAM	TONI BOBAN MAG. ING. ARCH. LEON PRKIĆ MAG.ING.ARCH.URB. ANA MARIJA STARČEVIĆ, MAG. ING. ARCH.
AUTHOR	BOBAN PLUS PARTNERI D.O.O.
MANAGER	TONI BOBAN MAG. ING. ARCH.

IN SPLIT, APRIL 2023.